

Installation kit for load cell F1215

with nominal loads from 1t to 100t



Description

The mounting parts for the force transducers are so designed that the force is applied in an optimum way.

The installation kit AZK01X011 for the compression load cell F1215 allows an easy, trouble-free implementation of the load cell in a construction. It provides an integrated lift-off and plate system against lateral forces, combined with a very low height.

The unit is secured with screws.

Features

- For compression load cell F1215
- Nominal loads 1 t... 100 t
- Lift-off protection
- Plate system against lateral forces
- Stainless steel design
- Easy implementation
- Low height

Measuring range

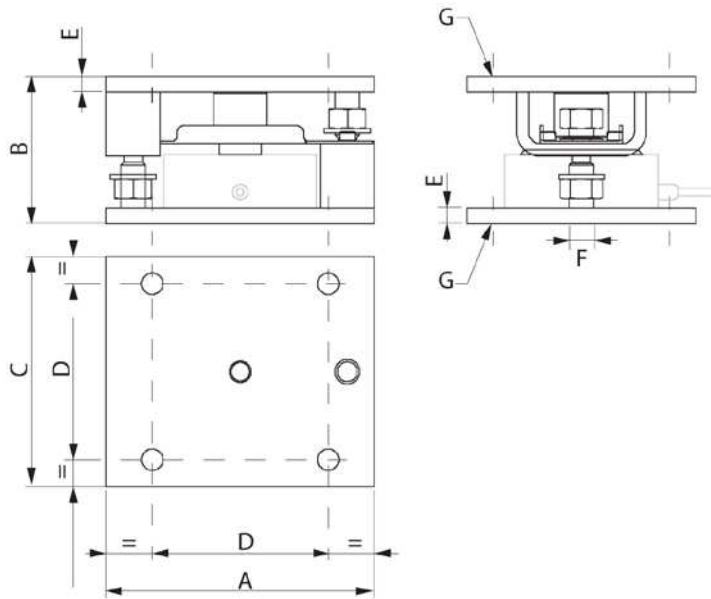
- 1 t ... 100 t

Applications

- Weighing

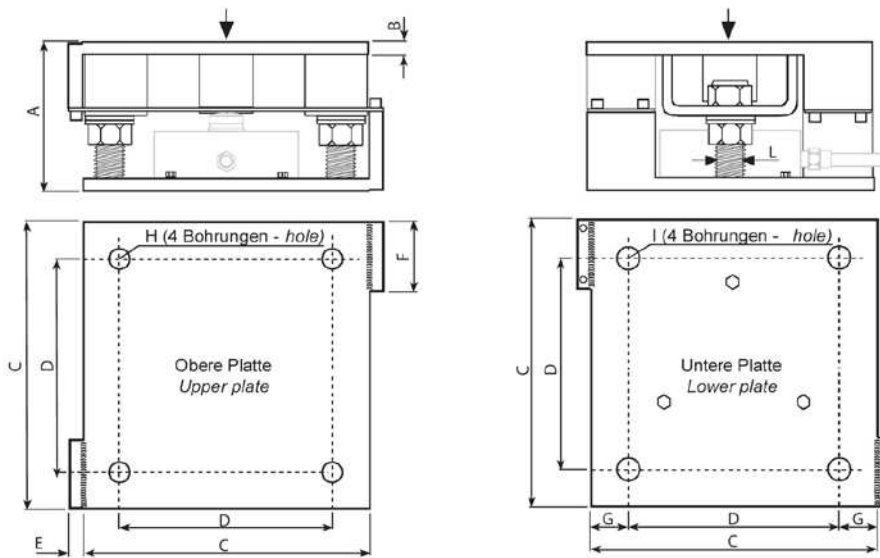
Model: AZK01X011

Dimensions



| | | |
|------------------------|---------|-------|
| Load cell F1215 | 1...15t | 30t |
| Max. horizontal forces | 8 kN | 10 kN |
| Max. lift-off forces | 20 kN | 35 kN |

| Nominal load F1215 | A | B | C | D | E | F | G (x8) | Weight |
|--------------------|-----|-----|-----|-----|----|-----|--------|--------|
| 1...15t | 175 | 96 | 150 | 115 | 10 | M16 | Ø14 | 6 kg |
| 30t | 230 | 118 | 200 | 160 | 10 | M20 | Ø17 | 10 kg |



| Nominal load F1215 | A | B | C | D | E | F | G (x8) | H | I | L | Weight |
|--------------------|-----|----|-----|-----|----|-----|--------|-----|-----|-----|--------|
| 50t, 100t | 175 | 96 | 150 | 115 | 10 | M16 | Ø14 | M20 | Ø23 | M30 | 34 kg |

Dimensions in mm

Subject of technical changes